

— SONY —

FX30

CAMERA GUIDE

The complete beginner's guide to mastering
your **Sony FX30**



— LEARN. SHOOT. CREATE. —



CAMERA BASICS

Get to know your FX30
inside and out



MENU SYSTEM

Navigate settings
with confidence



BEST SETTINGS

Recommended setups
for any situation



FOCUS & EXPOSURE

Achieve sharp focus
and perfect exposure



AUDIO & COLOR

Capture great audio
and stunning color



RECORD & PLAYBACK

Media, codecs and
playback guide



PERFECT FOR BEGINNERS

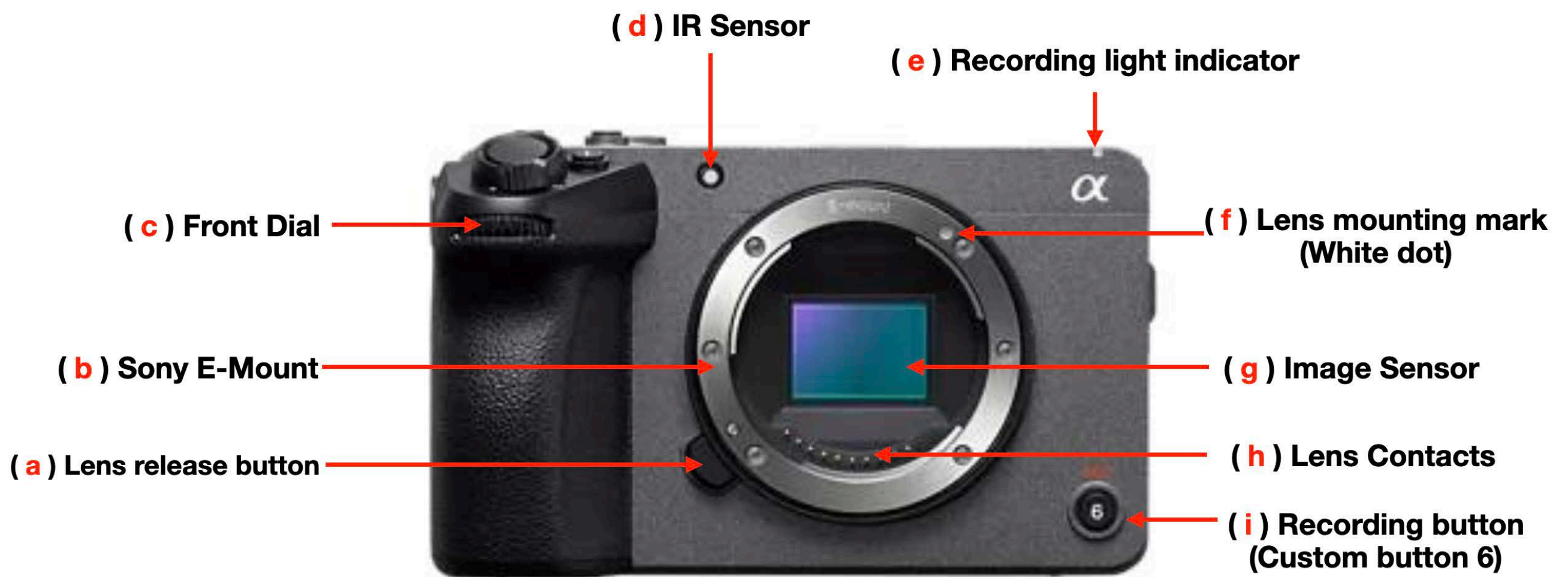
SIMPLE EXPLANATIONS • PRACTICAL TIPS • REAL-WORLD EXAMPLES



Get To Know Your Camera



1. Front View - Camera Body



Key Features:

(a) Lens release button

- - Press and hold this button to release and remove the lens.

(b) Sony E-Mount

- - Lens mount attachment where you attach the lens.

(c) Front Dial

- - By default, rotates to adjust the aperture (IRIS) of electronic lenses.

(d) IR Sensor

- - Assist with white balance and exposure control do not cover this area.

(e) Recording light indicator

- - Lights up red when the camera is actively recording, indicating operating status.

(f) Lens mounting mark (White dot)

- - Alignment marker that assist you to properly attach a lens.

(g) Image Sensor

- - Captures the image. It is the most important element in a camera.

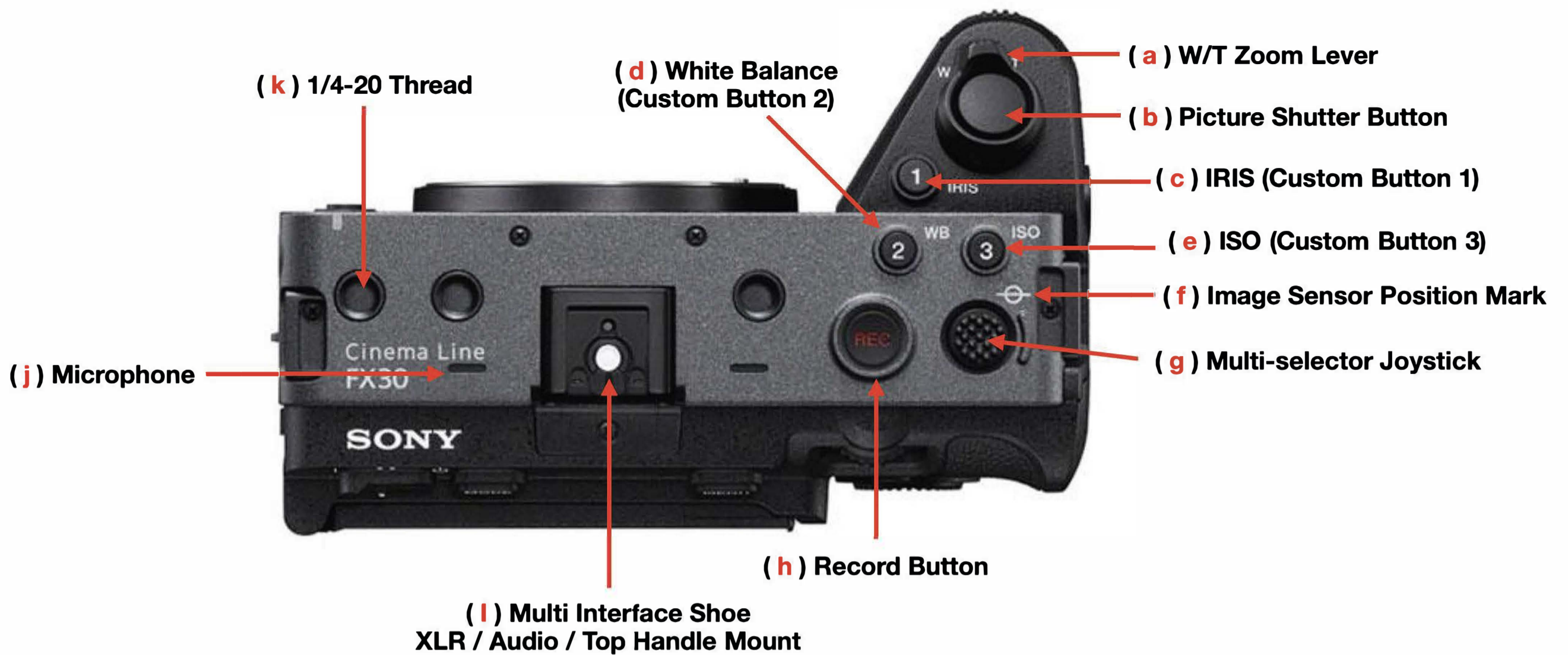
(h) Lens Contacts

- - Allows you to operate an electronic lens to control zoom, aperture & focus.

(i) Recording button (Custom button)

- - Start / Stop video record. It also allows you to customize and assign other functions if preferred.

2. Top View - Controls



Key Features:

(a) W/T Zoom Lever

-- Controls zoom on electronic zoom lenses. Please note that not all lenses are electronic and this function may not work.

(b) Picture Shutter Button

-- Take still photos.

(c) IRIS (Custom Button 1)

-- By default allows you to quickly access the settings for the IRIS also known as Aperture. It also allows you to customize and assign other functions if preferred.

(d) White Balance (Custom Button 2)

-- By default allows you to quickly access the White Balance settings. It also allows you to customize and assign other functions if preferred.

(e) ISO (Custom Button 3)

-- By default allows you to quickly access the ISO settings. It also allows you to customize and assign other functions if preferred.

(f) Image Sensor Position Mark

-- It marks the precise position of the sensor within the camera for an accurate focal distance when using measuring tape.

(g) Multi-selector Joystick

-- Helps you to quickly navigate the menu settings just like the rear dial. It can also assist you with focus point if assigned to that function.

(h) Record Button

-- Start / Stop record button.

(i) Multi Interface Shoe

-- Attach accessories such as, XLR Handle, microphone or monitor.

(j) Microphone

-- Captures audio when an external microphone is not in use as long as you turn it on in the camera audio settings.

(k) 1/4-20 Thread

-- Allows you to attach camera cage and/or accessories.

3. Rear View - Menu & Navigation



Key Features:

(a) Monitor / Touch Panel

-- Displays the image. It is touch screen for an easier and more efficient navigation through the menu & settings.

(b) Power Switch

-- Turn Camera ON (Left) or OFF (Right)

(c) MODE Button

-- Helps you select the camera Mode. Please make sure you are in MOVIE Mode for better understanding of the button functions and settings on this guide.

(d) Recording Lamp

-- Lights up red when the camera is actively recording, indicating operating status.

(e) MENU Button

-- Opens the Main Menu system.

(f) Rear Dial

-- By default, it controls and helps you adjust the ISO. For best performance, please keep the ISO to its Base/Native ISO of 800 when there is enough or too much light and 2500 when in low light scenarios.

(g) Focus Magnifier (Custom Button 5)

-- By default, it helps you check for focus more accurately. When clicked once it activates the magnifier. Click a second time and it zooms in to the selected area to assist you with focus. It also allows you to customize and assign other functions if preferred.

(h) Fn or Function Button

-- Access the function menu for fast changes to key settings.

(i) Control Wheel

-- Primarily assist you with navigating the Main Menu. In **MOVIE** Mode when rotates left or right it adjusts the Shutter Speed. If you click **UP** it helps you with different options for display on the camera screen. When click **DOWN** it gives you quick access to Shutter settings. When click **LEFT** it gives you quick access to Zebra settings. When click **RIGHT** it gives you quick access to focus Peaking assist settings.

(j) Delete Button (Custom Button 4)

-- Delete / Erase selected clip. It also allows you to customize and assign other functions if preferred. We recommend caution when assigning other functions to this custom button since it can create confusion with the customized function and Delete.

(k) Access Lamp

-- It blinks to indicate that media is been processed, recorded or transferred. When blinking, please avoid turning off the camera or ejecting the Media Card or battery off the camera. This may result in corrupted or damaged media.

(l) Playback Button

-- Allows you to review recorded media.

(m) Speaker

-- Allows you to listen to recorded audio.

4. Right Side View - Ports



Key Features:

(a) HDMI Port

- - External monitor, recorder, media output.

(b) 1/4-20 Thread

- - Allows you to rig camera accessories.

(c) Mic Input

- - Allows you to connect a microphone directly to the camera for clean, direct audio.

(d) Headphones Jack

- - Allows you to monitor the recorded audio.

(e) USB-C Port

- - Allows you to connect power directly to the camera, charge the battery or to transfer data/ media.

(f) Multi/Micro USB Port

- - Allows you to connect camera accessories such as a remote.

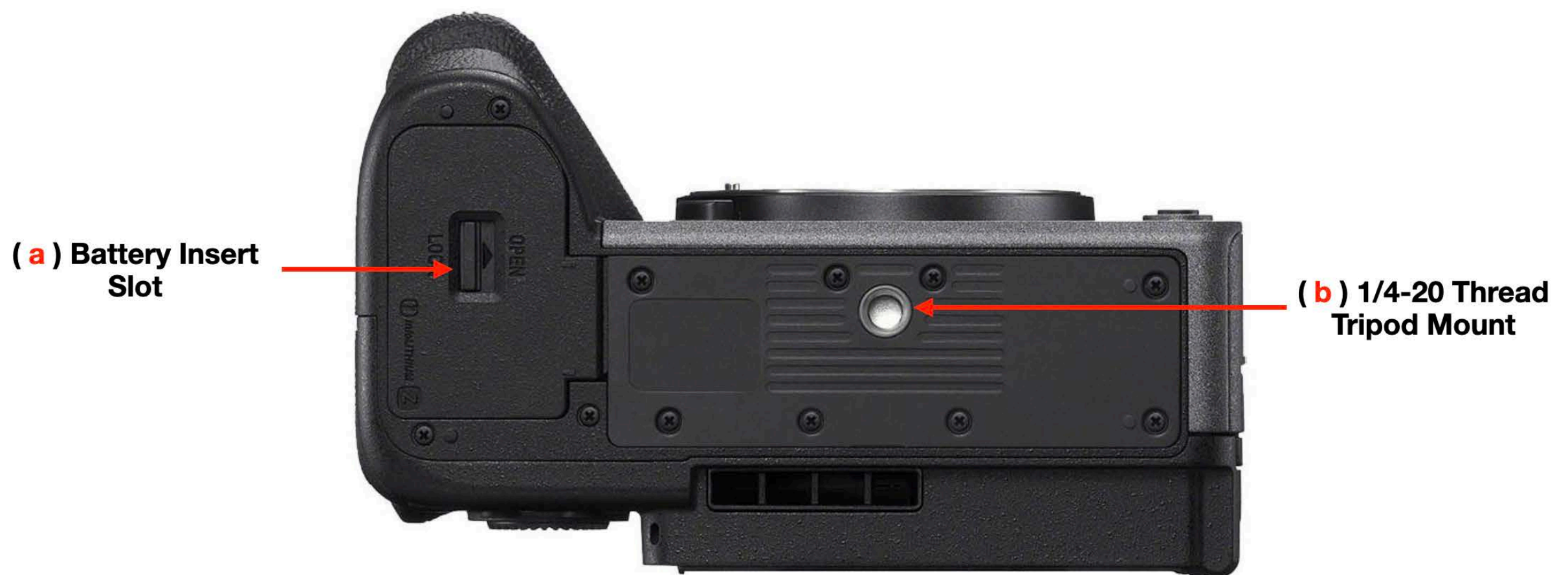
5. Left Side View - Media



Key Features:

- Card Insert **Slot 1** & **Slot 2**
- **CF Express** (High-Speed Recording) or **SD Card** (Standard Media Storage) Insert Slot.
- To insert a **CF Card**, please ensure that the pins or conductive pads are facing forward towards the lens to properly insert it. If inserting the card does not work right away, please do not force it you might be inserting it incorrectly.
- To insert an **SD Card**, please ensure that the pins or conductive pads are facing backwards towards the Monitor /Touch Panel to properly insert it. If inserting the card does not work right away, please do not force it you might be inserting it incorrectly.

6. Bottom View - Mounts & Power



Key Features:

(a) Battery Insert Slot

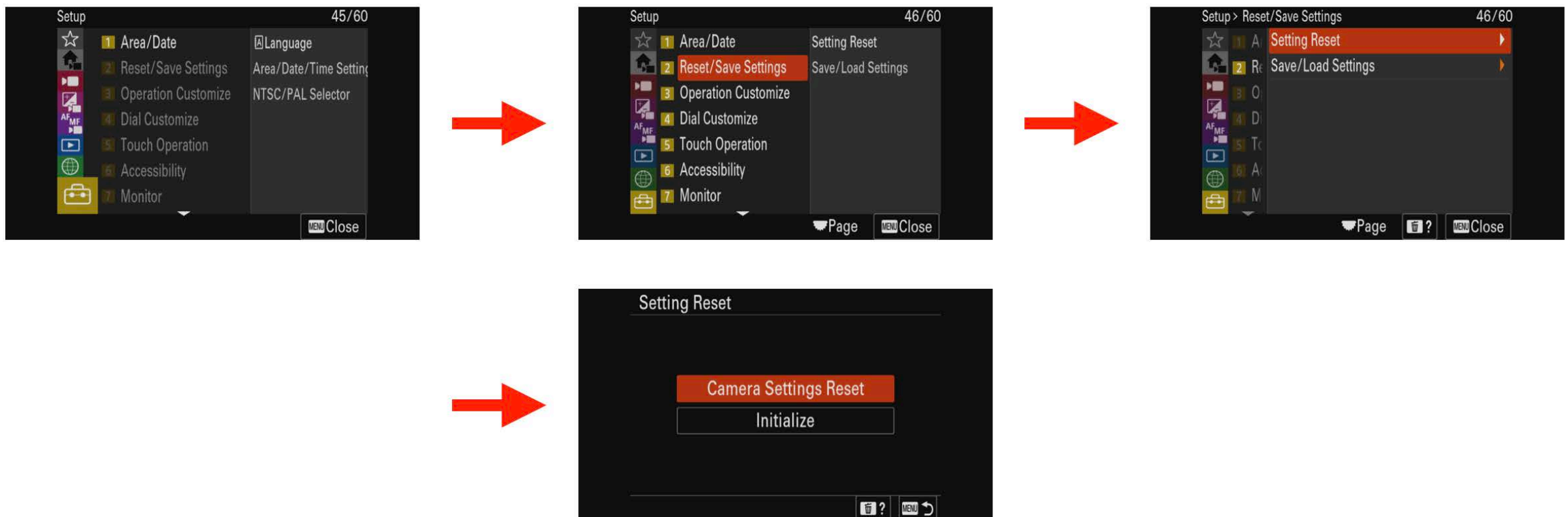
- - Primary power source insert slot.
- - Battery Insert.

(b) 1/4-20 Thread

- - Allows you to rig the camera safely to a tripod base plate, gimbal, shoulder rig, etc.

Settings Reset to Default Settings

MENU >> Setup (Yellow Toolbox) >> (2) Reset/Save Settings >> Setting Reset >> Camera Setting Reset >> Click Enter button located in the center of the rear dial to Confirm.

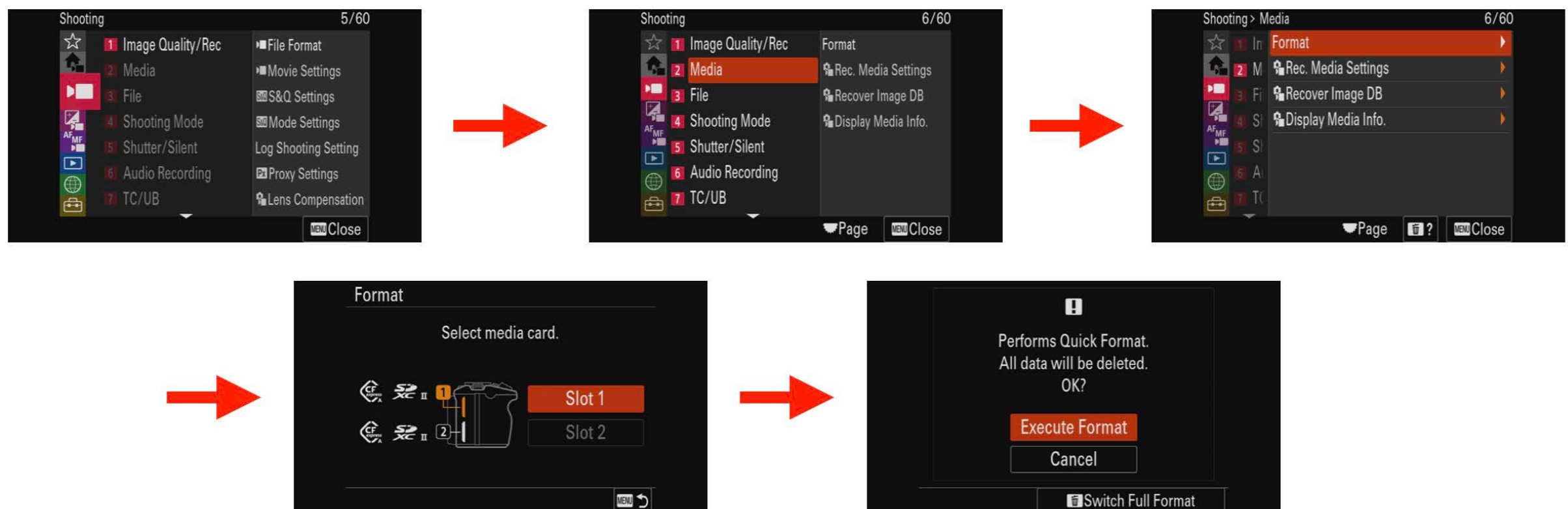


Good To Know:

In order for all of the setting in this guide work, we highly recommend that you reset your settings. In the event your screen looks different from this guide or the buttons does not operate like the description in here, please reset your settings before following through this guide.

Format / Erase / Delete CF & SD Card

MENU >> Shooting (Red Camera Menu) >> (2) Media >> Format >> Slot 1 (Top) or Slot 2 (Bottom) >> Execute Format >> Click Enter button located in the center of the rear dial to Confirm.



Good To Know:

Before formatting your card, please make sure that you have safely and properly transferred your footage to your computer or a hard drive. Once you have transferred your footage, it is recommended to always format your card at the start of the day. This will guarantee that you have all of the file space needed at any given time on set.

Beginner Settings - UHD 4K

1. Recording Format: XAVC S 4K
2. Frame Rate & Record Settings: 23.98 fps - 50M 4:2:2 10bit
3. Shutter Speed: 1/48
4. ISO: Outdoor 800 / Indoor 2500
5. White Balance: Daylight (5600K) / Tungsten Warm (3200K)
6. Focus Mode: AF-C (Continuous Autofocus)
7. Picture Profile (PP): OFF
8. Subject Detection: Human / Face-Eye Priority ON
9. Stabilization: Active Stabilization ON
10. Audio: ON / Recommended -12dB

1. Recording Format & Resolution

MENU >> Shooting (Red Camera Menu) >> (1) Image Quality / Rec >> File Format >> XAVC S 4K >> Click Enter button located in the center of the rear dial to Confirm.

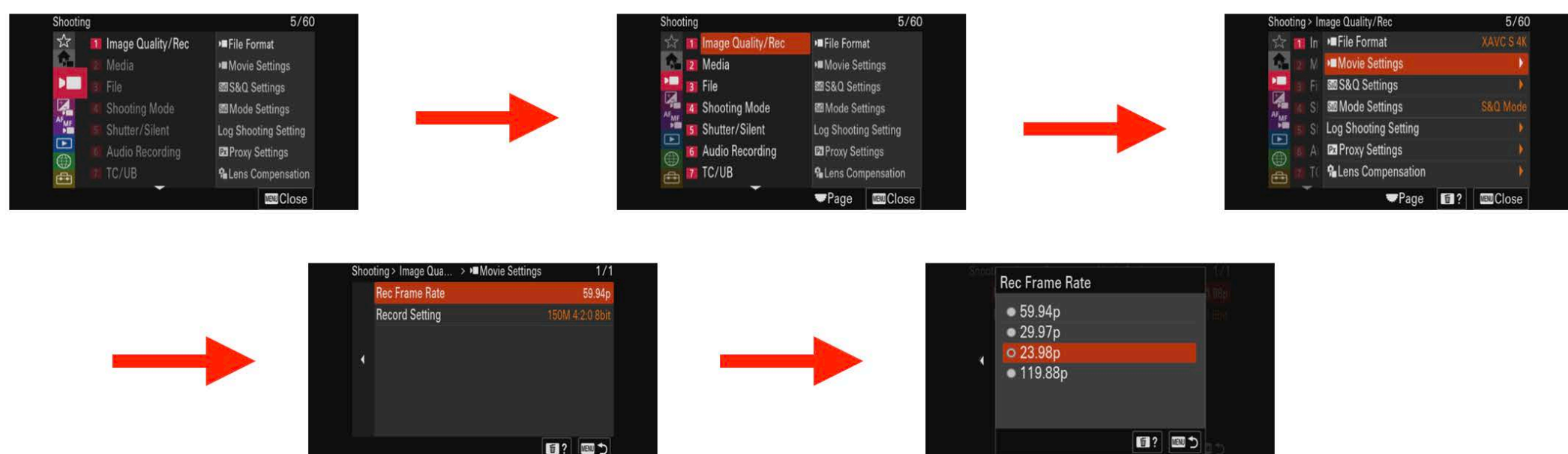


Good To Know:

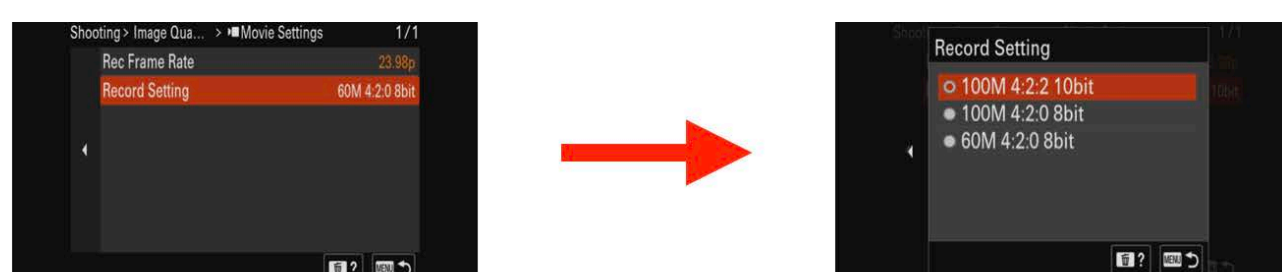
This format will allow you to shoot in a resolution of 3840 x 2160 (UHD 4K). If you are looking for a lower and a more manageable format / resolution for post production, you can also choose XAVC S HD (1080p)

2. Frame Rate & Record Settings: 23.98 fps - 100M 4:2:2 10bit

(a) MENU >> Shooting (Red Camera Menu) >> (1) Image Quality / Rec >> Movie Settings >> Rec Frame Rate >> 23.98p >> Click Enter button located in the center of the rear dial to Confirm.



(b) >> Record Setting >> 100M 4:2:2 10bit >> Click Enter button located in the center of the rear dial to Confirm.

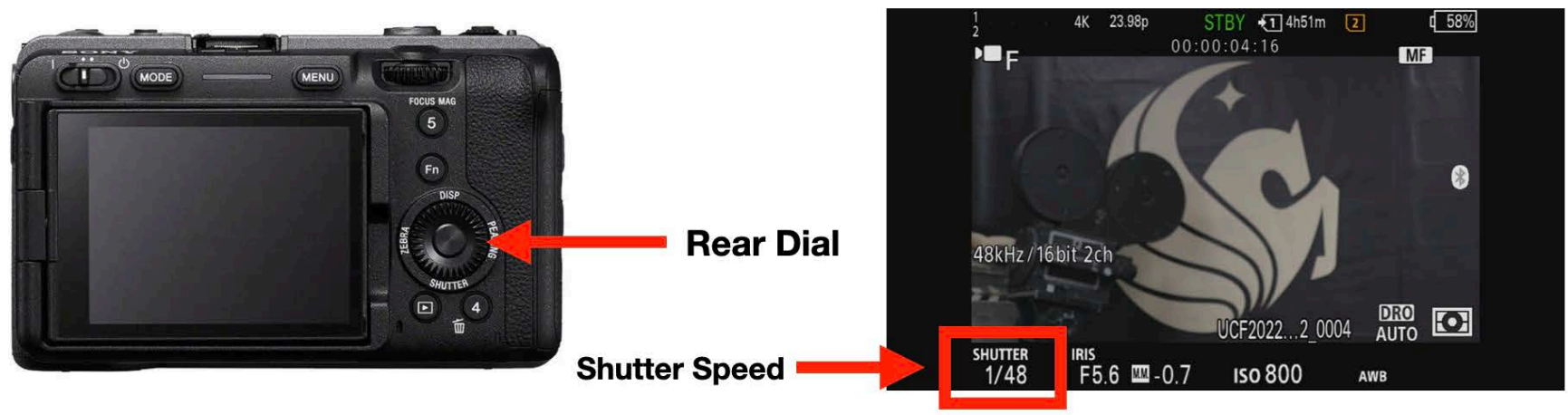


Good To Know:

We do not recommend the use of Slow Motion Frame Rate unless is intended. In the event you find yourself with the intention or need for Slow Motion Frame Rate, please adjust it to 59.94p or 119.88p. Keep in mind that Post Production with these Frame Rates requires different workflows.

3. Shutter Speed: 1/50

Rotate the Rear Dial left or right to adjust the Shutter Speed. Make sure it is set to 1/50.



Good To Know:

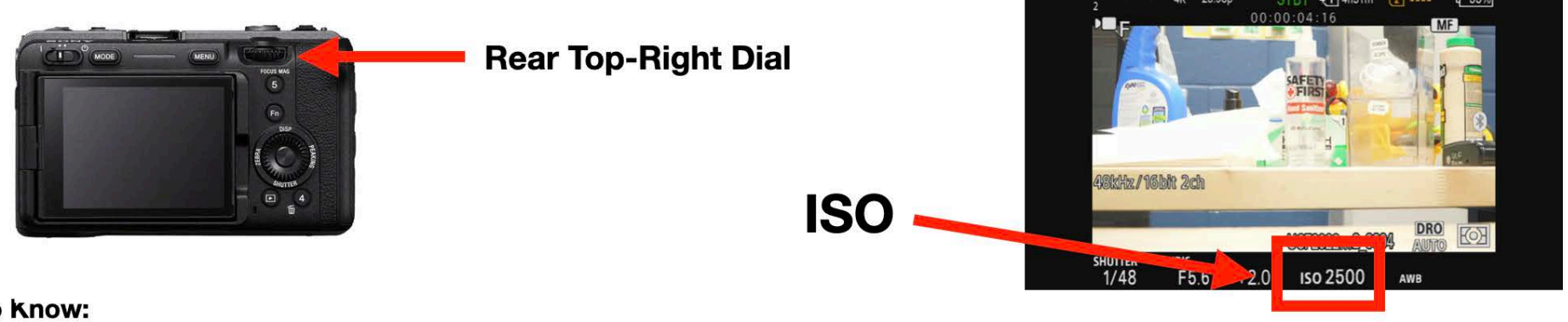
Shutter Speed should always be 2 times (Double) the Frame Rate or the closest number to it. For Example: With a Frame rate of 23.98p x 2 equals 47.96 therefore, the Shutter Speed should be 1/48. In the event the camera does not give you the option for the exact number, like 1/48, please adjust to the next number closest to that total. Example: If your Frame Rate is 59.94p x 2, equals 119.88 the closest Shutter Speed in this camera is 1/125.

4. ISO: Dual Base ISO 800 / 2500

(a) Outdoor ISO 800:
Rotate REAR / TOP-RIGHT DIAL left or right to adjust the ISO. Adjust to 800.



(b) Indoor ISO 2500:
Rotate REAR / TOP-RIGHT DIAL left or right to adjust the ISO. Adjust to 2500.



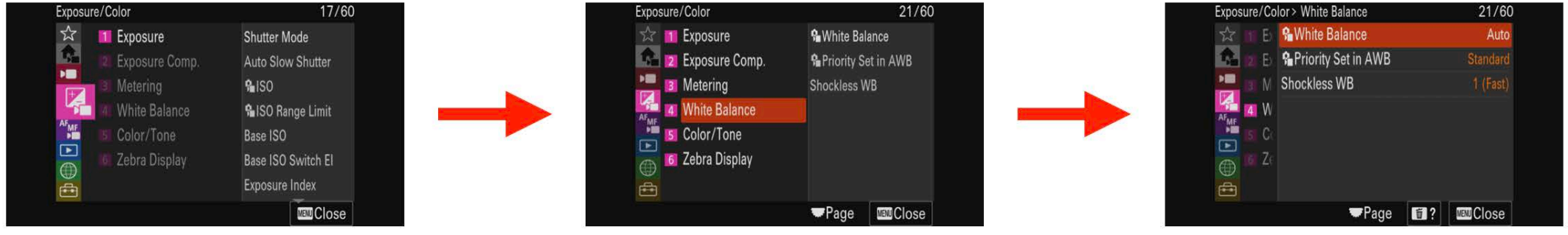
Good To Know:

This camera poses Dual Base / Native ISO. This means, with this camera and depending the scenario you find yourself in, It is recommended to use one of the two Base / Native ISO to guarantee good quality and performance in the image. It is recommended that when scenes are taking place outdoor or the location is too bright, adjust the ISO to 800. When indoor, low light scenarios, or even at night it is best to adjust the ISO to 2500. The camera gives you a wide range of ISO options but it is best to use them with the Factory & Company's recommendation for good quality performance.

5. White Balance:

(a) Outdoor / Daylight / 5600K

MENU >> Exposure / Color (Pink camera Menu) >> (4) White Balance >> White Balance >> K - C. Temp./Filter >> Click right button on Rear Dial >> Adjust Color Temp to 5600K >> Click Enter button located in the center of the rear dial to Confirm.



5. White Balance:

(b) Indoor / Tungsten Warm / 3200K

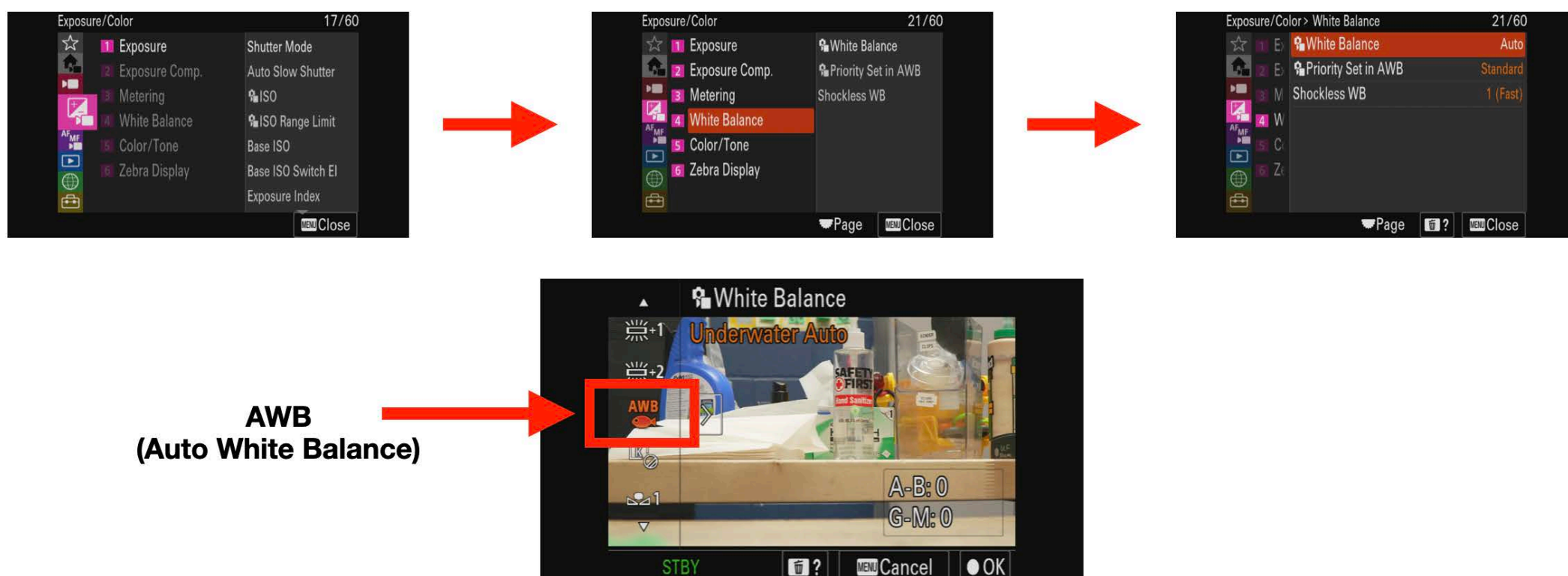
MENU >> Exposure / Color (Pink camera Menu) >> (4) White Balance >> White Balance >> K - C. Temp./Filter >> Click right button on Rear Dial >> Adjust Color Temp to 3200K >> Click Enter button located in the center of the rear dial to Confirm.



5. White Balance:

(c) AWB Auto White Balance

MENU >> Exposure / Color (Pink camera Menu) >> (4) White Balance >> White Balance >> AWB (Auto) >> Click Enter button located in the center of the rear dial to Confirm.

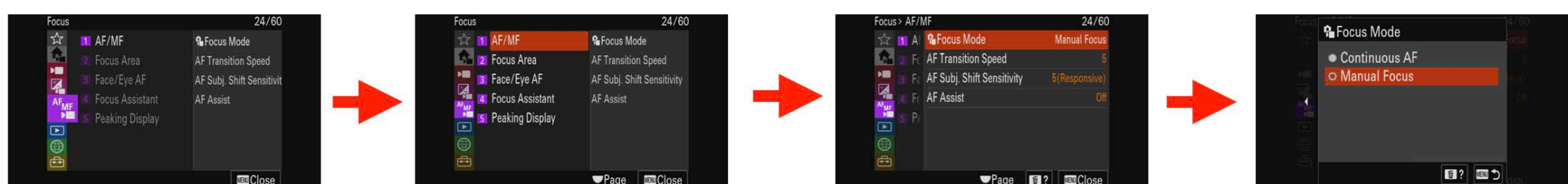


Good To Know:

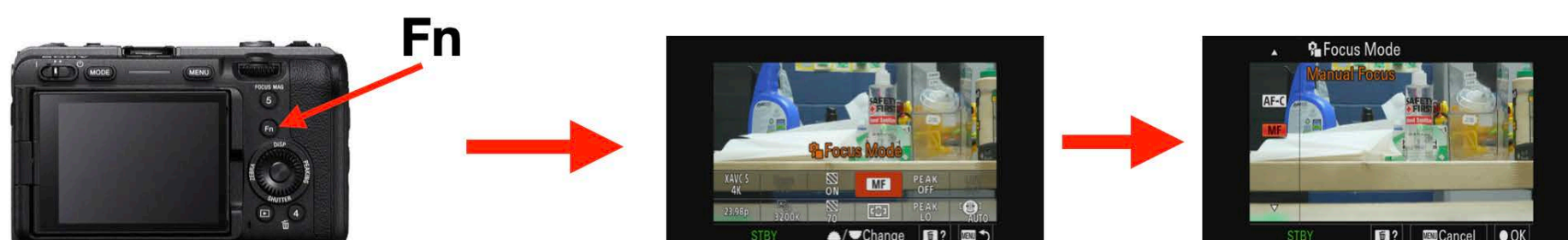
Please adjust manually the White Balance at all times. In the event you find yourself in a scenario where Daylight or Tungsten Warm White Balance does not apply, you can then adjust to Auto White Balance.

6. Focus Mode: Manual Focus (Recommended)

(a) **MENU >> Focus (AF MF Purple Camera Menu) >> (1) AF / MF >> Focus Mode >> Manual Focus >> Click Enter button located in the center of the rear dial to Confirm.**



(b) **For quick access to Focus Mode you can also: Press de Fn button above the Rear Dial >> Select Focus Mode >> Select Manual Focus >> Click Enter button located in the center of the rear dial to Confirm.**

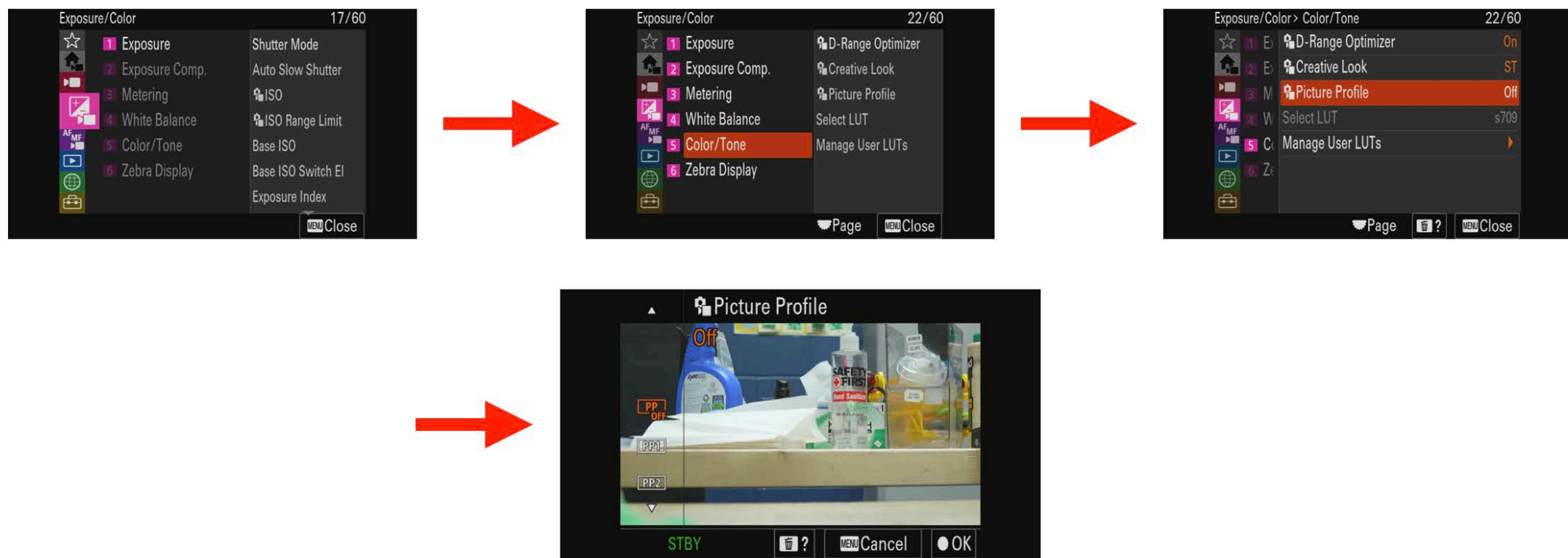


Good To Know:

Only use AF-C or Continuous Auto Focus when you find yourself in a challenging situation where you cannot adjust the focus manually. Some examples are: Walking shots, tracking shots, or any shot that requires a lot of movement. One main issue you may encounter when using Auto Focus is that if there are a lot of objects moving within the shot, the auto focus will constantly try to adjust and this may affect the focus on the Main Subject.

7. Picture Profile (PP): OFF

MENU >> Exposure / Color (Pink camera Menu) >> (5) Color / Tone >> Picture Profile >> PP OFF >> Click Enter button located in the center of the rear dial to Confirm.

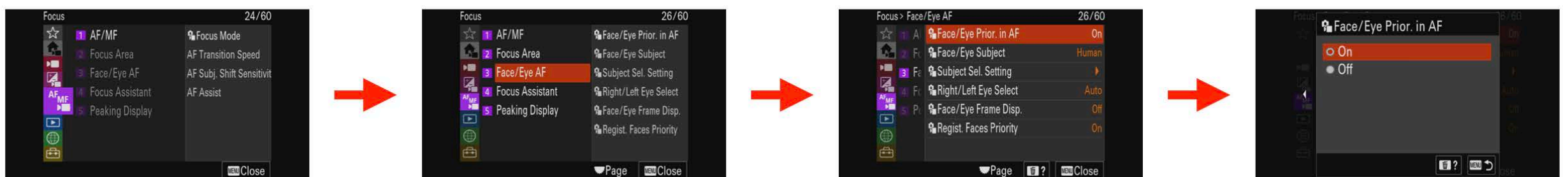


Good To Know:

Picture Profile allows you to set specific preferred looks that can affect the color workflow in post production. One example could be setting up the Picture Profile to PP11 for S-Log. Only use or turn on Picture Profile if you understand the look and post production workflow you are going for and how to properly use of it.

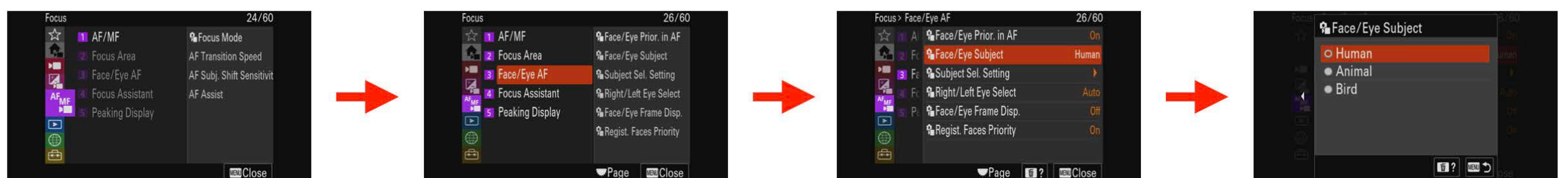
8. Subject Detection: Human / Face-Eye Priority ON

(a) MENU >> Focus (AF MF Purple Camera Menu) >> (3) Face / Eye AF >> Face / Eye Prior. In AF >> ON >> Click Enter button located in the center of the rear dial to Confirm.



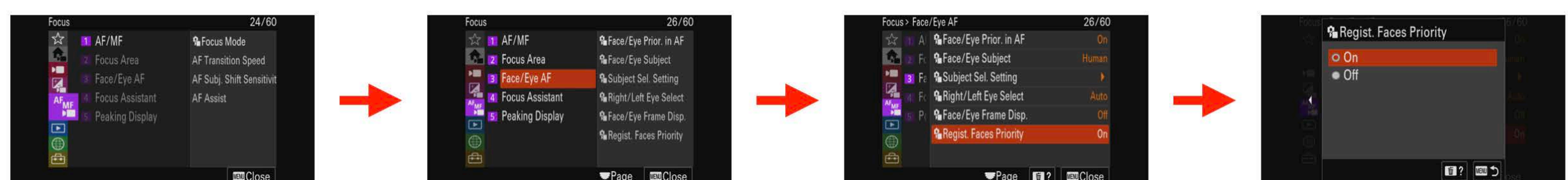
Also in the same Menu:

(b) Face / Eye Subject >> Human >> Click Enter button located in the center of the rear dial to Confirm.



8. Subject Detection: Human / Face-Eye Priority ON

(c) Regist. Faces Priority >> ON >> Click Enter button located in the center of the rear dial to Confirm.

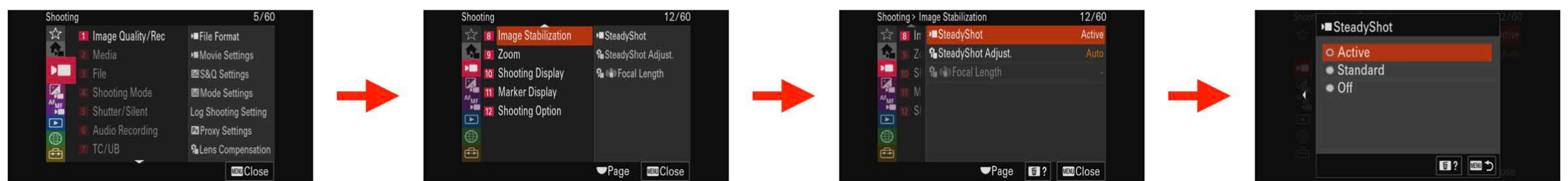


Good To Know:

This setting will assist you and prioritize the focus on your subject.

9. Stabilization: Active Stabilization ON

MENU >> Shooting (Red Camera Menu) >> (8) Image Stabilization >> Steady Shot >> Active >> Click Enter button located in the center of the rear dial to Confirm.

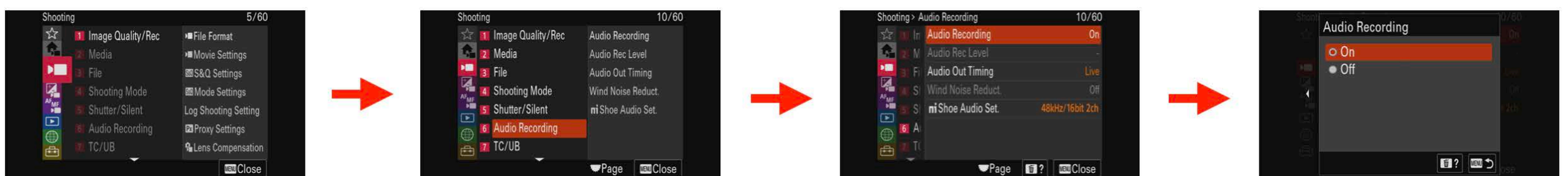


Good To Know:

The image stabilization in your Sony FX30 Camera, helps with smoothing out shakiness and vibration when the camera is handheld. Please note that while it does a great job in stabilizing your image, it does not eliminate it completely like a gimbal would for example. If the camera shakes or vibrates abruptly, it will be noticeable in the image.

10. Audio: ON

MENU >> Shooting (Red Camera Menu) >> (6) Audio Recording >> Audio Recording >> ON >> Click Enter button located in the center of the rear dial to Confirm.



Good To Know:

It is always recommended to turn on Audio in the camera regardless of needing the audio for the shot in post-production or not. And most definitely turning it on if you intend to use an external shotgun mic. Please refer to the Audio segment for more detailed information.

TROUBLESHOOTING

Camera won't Turn On -

- Check battery is charged.
- Check battery is properly inserted.
- Check Power Button is On (Left).

Camera won't Record -

- Make sure CF card is inserted.
- Format CF Card.
- Use one of the 2 REC buttons.
- Picture Shutter won't record.
- If battery is too low, it won't record.

No Card Error -

- Make sure CF Card is properly inserted.
- Pull the CF Card and Insert again.
- Check in the Menu the correct Slot (1 or 2) is selected.
- Format CF Card.

Image Looks too Dark -

- Check and open up your IRIS / Aperture / F-Stop.
- Check your ISO level.
- Make sure you use one of two Base ISO (800 or 2500).
- Check your lighting conditions. (Interior or Exterior, Day or Night)

Image Looks too Bright -

- Use ND Filters
- Check and close up your IRIS / Aperture / F-Stop.
- Check your ISO level.
- Make sure you use one of two Base ISO (800 or 2500).
- Check your lighting conditions. (Interior or Exterior, Day or Night).

Manual Focus not working -

- Check your settings and make sure Manual Focus is On.
- Make sure your lens is properly attached to the camera.
- Check for any visible dent/damage on the lens.

TROUBLESHOOTING

No Audio in my footage -

- Check your Audio Settings are ON.
- Make sure your Microphone is connected.

Image Looks Blue -

- Check your White Balance and set it to 5600K.
- Check your lighting conditions. (Interior or Exterior, Day or Night).

Image Looks Orange -

- Check your White Balance and set it to 3200K.
- Check your lighting conditions. (Interior or Exterior, Day or Night).

Image Looks too grainy -

- Grain in the image is know as Digital Noise.
- Check your ISO levels.
- Make sure you use one of two Base ISO (800 or 2500).
- Check your lighting conditions. (Interior or Exterior, Day or Night).

Camera is Overheating -

- Make sure Camera is not exposed directly to Sunlight.
- Allow airflow around the Camera
- Turn Camera Off during long breaks.